

Optional Examinations

*You could have optional examination(s) by adding on other health checkup program.

Test	Test Items	Contents	Price(won)
Female system	Transvaginal ultrasound	Uterine fibroids, endometrial diseases, ovarian cancer, ovary cyst	156,000 125,000
	Human papilloma virus DNA	DNA screening for the virus that causes cervical cancer	130,000 104,000
	Breast ultrasound	Breast cysts, breast nodules, breast cancer	221,000 177,000
Male system	Prostate ultrasound	Prostate enlargement, prostate cancer	208,000 166,000
	Low dose chest CT	Bronchial lung diseases, early diagnosis and screening in lung cancer	221,000 177,000
Heart system	Echocardiogram	Heart failure, heart valve diseases, congenital heart diseases	325,000 260,000
	Coronary artery CT	Coronary artery occlusion, coronary artery stenosis, myocardial infarction	455,000 364,000
Whole body system	Whole body MRI	Early detection of various diseases by whole body scanning without radiation exposure	1,560,000 1,248,000
	PET-CT (Brain + Torso)	Early diagnosis of cancer, determination in staging of cancer and cancer metastasis (whole body, brain tumor)	1,560,000 1,248,000
	PET-CT (Torso)	Early diagnosis of cancer, determination in staging of cancer and cancer metastasis (Torso)	1,235,000 988,000
Brain system	Brain MRI & MRA & Hippocampus MRI	Detailed brain evaluation including dementia test	1,690,000 1,352,000
	Brain MRI & MRA	Brain infarction, brain hemorrhage, brain tumor, cerebrovascular diseases, brain aneurysm	1,300,000 1,040,000
	Brain MRI	Brain infarction, brain hemorrhage, brain tumor	780,000 624,000
	Brain MRA	Brain vascular diseases, atherosclerotic intracranial arterial stenosis, brain aneurysm	650,000 520,000
	Brain angiography CT	Brain infarction, brain tumor, brain aneurysm, cerebrovascular diseases	390,000 312,000
	Carotid ultrasound	Carotid artery stenosis, occlusive vascular disease	247,000 198,000
Musculoskeletal system	C-spine MRI & X-ray	To check cervical spine (neck) bone and nerve structure - including cervical x-ray	819,000 655,000
	L-spine MRI & X-ray	To check lumbar spine (back) bone and nerve structure - including lumbar x-ray	819,000 655,000
	Shoulder MRI & X-ray	To check the musculoskeletal system of shoulder - including shoulder X-ray	780,000 624,000
	Elbow MRI & X-ray	To check the musculoskeletal system of elbow - including elbow X-ray	780,000 624,000
	Knee MRI & X-ray	To check the musculoskeletal system of knee - including shoulder X-ray	780,000 624,000
Gastrointestinal system	Colonoscopy	Inflammatory bowel disease, colon ulcer, colon polyp, colon cancer	221,000 177,000
	Endoscopy under sedation	Conscious sedation	130,000 104,000
	Abdominal & Pelvis CT	Liver diseases, hepatobiliary cancer, kidney disease, pancreas cancer, bladder cancer, ovarian cancer	390,000 312,000
Endocrinology system	Thyroid ultrasound	Thyroid cyst, thyroiditis, thyroid cancer	195,000 156,000
	Bone densitometry	Osteoporosis	91,000 73,000
	Abdominal Obesity CT	To check obesity level using visceral fat and subcutaneous fat ratio	78,000 62,000
	Fatty acid analysis	To evaluate the vascular health with analysis of fatty acid of omega 3 and omega 6 in the body	260,000 210,000
Allergy	Allergy blood test (MAST, 105 types)	To check the allergens such as inhalants, foods, house dust, mite, ect.	234,000 187,000

Optional Examinations

*You could have optional examination(s) by adding on other health checkup program.

Test	Test Items	Contents	Price(won)	
Anti-aging	Vitamin D	Bone health, chronic fatigue, metabolic disease	65,000 52,000	
	Measurement of biological age	To check general health condition and aging status, depending on age	39,000 31,000	
	Telomere	Through telomere biological age, you will figure out your health condition and aging status and how fast your aging status is progressing on. It can be used for evaluation and management indicator for proper lifestyle and continuous maintenance	390,000 310,000	
	Measurement of active oxygen and antioxidant activity	This is the index of aging and active oxygen and it is utilized as data for life style modification.	78,000 63,000	
Genetic testing	Customized (5 types)	Male cancer	Stomach cancer, colon cancer, lung cancer, hepatocellular cancer, prostate cancer	172,000 138,000
		Female cancer	Stomach cancer, colon cancer, breast cancer, lung cancer, thyroid cancer	172,000 138,000
		General diseases	Type 2 diabetes, brain infarction, osteoarthritis, osteoporosis, late-onset Alzheimer disease	172,000 138,000
		Brain-Heart vascular diseases	Atrial fibrillation, coronary artery disease, myocardial infarction, brain infarction, brain aneurysm	172,000 138,000
		Gynecologic diseases	Breast cancer, ovary cancer, thyroid cancer, osteoporosis, osteoarthritis	172,000 138,000
	Brain and nervous system diseases	Parkinson's disease, late-onset Alzheimer disease, migraine, brain infarction, brain aneurysm	172,000 138,000	
	Cancer (11 types)	Stomach cancer, lung cancer, colon cancer, Hepatocellular cancer, thyroid cancer, renal cell cancer, pancreas cancer ▶ Male: prostate cancer, testicular cancer, bladder cancer, esophageal cancer ▶ Female: breast cancer, cervical cancer, endometrium cancer, ovary cancer	390,000 310,000	
	Common diseases (27 types)	Chronic hepatitis B, non-alcoholic fatty liver disease, Crohn's disease, ulcerative colitis, type 2 diabetes, obesity, hyperlipidemia, systemic lupus erythematosus(LUPUS), psoriasis, atopic dermatitis, periodontal disease, allergic rhinitis, chronic obstructive pulmonary disease, asthma, glaucoma, macular degeneration, gout, rheumatoid arthritis, osteoarthritis, osteoporosis, brain infarction, dementia, coronary artery disease, atrial fibrillation, myocardial infarction, hypertension, brain aneurysm. (addition for female: polycystic ovarian syndrome)	390,000 310,000	
	Platinum Lite (38 types)	Cancer (11 types) + Common diseases (27 types)	650,000 520,000	
	Platinum (48 types)	Platinum Lite (38 types) + Food/Drug response (4 types) + Physical Characteristics (6 types) * Food/Drug response(4 types): Warfarin maintenance dose, cyclophosphamide -induced adverse drug reactions, ACEI(Angiotensin Converting Enzyme Inhibitors) therapy in hypertensive, methamphetamine psychosis * Physical Characteristics (6 types): Fibrinogen response to ambient particulate material, malocclusion, triglycerides level, high myopia, alcohol dependence, nicotine dependence	1,300,000 1,040,000	
	Noble (92 types)	Platinum (48 types) + Rare diseases (44 types) * A one stop solution for VIP customers that covers all the services, ranging from cancers, common disease and rare diseases.	2,600,000 2,080,000	

<http://www.caumc.or.kr/eng/>



Differentiated Services of CAUHS Health Promotion Center

- 1 : 1 customized counselling with a professional nurse prior to check-up
- One-stop system with One to One escort by "Flow manager"
- Easy registration and convenient proceeding using the electronic tag system
- Detect various disease in early stage with reliability with advanced equipment
- Performing the gastroscopy and colonoscopy at the same time, on the same day
- Each field specialists performing the procedure and making the judgement for the results.
- Cooperation with Outpatient Department and emergency medical treatment system
- Consultation with comparative analysis based on past screening results

CHUNG-ANG UNIVERSITY HOSPITAL HEALTH PROMOTION CENTER

MEDICAL CHECK-UP PROGRAM

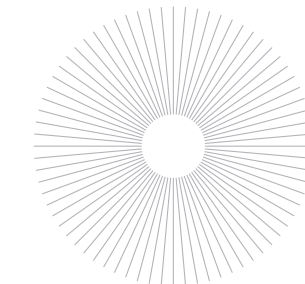
- You may inquire or make an appointment through various channels.

[TEL] 02)6299-3025

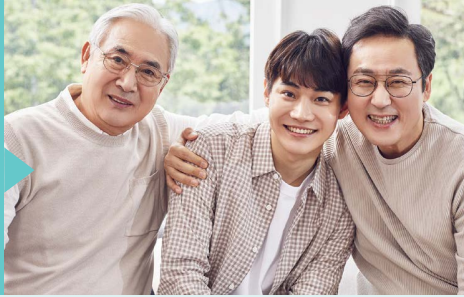
[Email] cauic@caumc.or.kr

[Address] 102, Heukseok-ro, Dongjak-gu, Seoul, Republic of Korea

[Website] <http://www.caumc.or.kr/eng>



Health Check-up in men



Male Basic Health Checkup

Program	Price(won)	Test items
Basic checkup Standard	858,000 687,000	Body measurements (height, weight, blood pressure), body composition analysis, eye exam(tonometry, fundus photography, visual acuity), audiometry, pulmonary function test, chest X-ray(front/lateral), EKG, blood typing, general blood analysis, Hepatitis A/B/C, liver & kidney & thyroid function test, electrolyte panel, diabetes(fasting blood sugar, HbA1c), lipid level, uric acid, rheumatoid factors, tumor markers(liver, colon, pancreas, prostate), syphilis, AIDS, urinalysis, stool exam(occult blood, parasite), abdominal ultrasound, gastroscopy(Non-sedation), dental exam, dietary habit assessment

Specialized Checkup Packages

Program	Price(won)	Test items
Men's health system	1,083,000 867,000	[Standard program] + Prostate ultrasound, Male hormones
Respiratory System	1,047,000 838,000	[Standard program] + Low dose chest CT
Gastrointestinal system	1,610,000 1,288,000	[Standard program] + Colonoscopy(under conscious sedation), Abdominal & pelvis CT
Cardiovascular system	1,695,000 1,356,000	[Standard program] + Blood tests for heart disease, Arterial stiffness test (Ankle Brachial Index: ABI), Echocardiogram, Coronary artery CT
Brain System	2,710,000 1,928,000	[Standard program] + Blood tests for brain disease, Arterial stiffness test (Ankle Brachial Index: ABI), Brain MRI & MRA, Carotid ultrasound

"PLUS" Checkup Packages

Program	Price(won)	Test items
Cancer precision	2,905,000 2,324,000	[Standard program] + Low dose chest CT, Thyroid ultrasound, Bone densitometry, Vitamin D, Echocardiogram, Carotid ultrasound, Prostate ultrasound, Male hormones, Colonoscopy (under conscious sedation), Abdominal & Pelvis CT
Premium	4,550,000 3,640,000	[Standard program] + Low dose chest CT, Thyroid ultrasound, Bone densitometry, Vitamin D, Echocardiogram, Carotid ultrasound, Prostate ultrasound, Male hormones, Colonoscopy (under conscious sedation), Abdominal & Pelvis CT, Blood tests for brain/heart disease, Arterial stiffness test(Ankle Brachial Index: ABI), Brain MRI&MRA, Coronary artery CT

Health Check-up in women



Female Basic Health Checkup

Program	Price(won)	Test items
Basic Checkup Basic	780,000 624,000	Body measurements (height, weight, blood pressure), body composition analysis, eye exam(tonometry, fundus photography, visual acuity), audiometry, pulmonary function test, chest X-ray(front/lateral), EKG, blood typing, general blood analysis, Hepatitis A/B/C, liver & kidney & thyroid function test, electrolyte panel, diabetes(fasting blood sugar, HbA1c), lipid level, uric acid, rheumatoid factors, tumor markers(liver, colon, pancreas, ovary, breast), syphilis, AIDS, urinalysis, stool exam(occult blood, parasite), abdominal ultrasound, gastroscopy(Non-sedation), dental exam, dietary habit assessment
Standard	930,000 744,000	[Female basic program] + Mammography, Pap smear, Female hormones

Specialized Checkup packages

Program	Price(won)	Test items
Women's health system	1,480,000 1,184,000	[Standard program] + Transvaginal ultrasound, breast ultrasound, HPV (Human papilloma virus) test, Bone densitometry
Respiratory System	1,099,000 880,000	[Standard program] + Low dose chest CT
Gastrointestinal system	1,675,000 1,340,000	[Standard program] + Colonoscopy(under conscious sedation), Abdominal & Pelvis CT
Cardiovascular system	1,760,000 1,408,000	[Standard program] + Blood tests for heart disease, Arterial stiffness test (Ankle Brachial Index: ABI), Echocardiogram, Coronary artery CT
Brain System	2,475,000 1,980,000	[Standard program] + Blood tests for brain disease, Arterial stiffness test (Ankle Brachial Index: ABI), Brain MRI & MRA, Carotid ultrasound

"PLUS" Checkup Packages

Program	Price(won)	Test items
Cancer precision	3,230,000 2,584,000	[Standard program] + Low dose chest CT, Thyroid ultrasound, Bone densitometry, Vitamin D, Echocardiogram, Carotid ultrasound, Transvaginal ultrasound, Human papilloma virus DNA, breast ultrasound, Colonoscopy (under conscious sedation), Abdominal & Pelvis CT
"PLUS" Checkup Packages Premium	4,810,000 3,848,000	[Standard program] + Low dose chest CT, Thyroid ultrasound, Bone densitometry, Vitamin D, Echocardiogram, Carotid ultrasound, Transvaginal ultrasound, Human papilloma virus DNA, Breast ultrasound, Colonoscopy (under conscious sedation), Abdominal & Pelvis CT, Blood tests for brain/heart disease, Arterial stiffness test(Ankle Brachial Index: ABI), Brain MRI&MRA, Coronary artery CT

Overnight Intensive Program «DIAMOND Package»

For the "DIAMOND" checkup, you will be admitted to the VIP room and get a comfortable checkup for 2 days and 1 night



Male Diamond Package

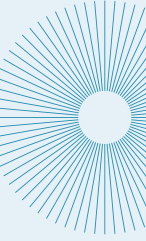
Program	Price(won)	Test items	
Diamond Package (2 days, 1 night)	6,820,000 5,456,000	Basic	[Male Standard Program]
		Brain system	Blood tests for brain disease, Brain MRI & MRA & Hippocampus MRI, Carotid ultrasound
		Heart system	Blood tests for heart disease, Arterial stiffness test (Ankle Brachial Index: ABI), Echocardiogram, Coronary artery CT
		Lung system	Low dose chest CT
		Gastrointestinal system	Colonoscopy (under conscious sedation), Abdominal & Pelvis CT
		Endocrine system	Abdominal obesity CT, Bone densitometry, Vitamin D, Thyroid ultrasound
		Spine	Choose 1 (Cervical spine MRI & X-ray or Lumbar spine MRI & X-ray)
		Allergy	Allergy blood tests (105 types)
		Male system	Male hormones, Prostate ultrasound
Others	Anemia, teeth X-ray, Stress test, Measurement of biological age, Choose 1 (Herpes Zoster vaccination or Pneumococcal vaccination)		

Female Diamond Package

Program	Price(won)	Test items	
Diamond Package (2 days, 1 night)	7,080,000 5,664,000	Basic	[Female Standard Program]
		Brain system	Blood tests for brain disease, Brain MRI & MRA & Hippocampus MRI, Carotid ultrasound
		Heart system	Blood tests for heart disease, Arterial stiffness test (Ankle Brachial Index: ABI), Echocardiogram, Coronary artery CT
		Lung system	Low dose chest CT
		Gastrointestinal system	Colonoscopy (under conscious sedation), Abdominal & Pelvis CT
		Endocrine system	Abdominal obesity CT, Bone densitometry, Vitamin D, Thyroid ultrasound
		Spine	Choose 1 (Cervical spine MRI & X-ray or Lumbar spine MRI & X-ray)
		Allergy	Allergy blood tests (105 types)
		Female system	Human papilloma virus DNA, Transvaginal ultrasound, Breast ultrasound
Others	Anemia, teeth X-ray, Stress test, Measurement of biological age, Choose 1 (Herpes Zoster vaccination or Pneumococcal vaccination)		

*Our professional nurse will design a customized program in consideration of your individual's health condition.

Preparation prior to health checkup



FASTING

- Avoid meat, alcohol consumption and overwork for 2~3days before your checkup.
 - **Morning checkup:** One day before your examination, you should have the light dinner before 7PM and anything including water, chewing gum, cigarette will not be allowed after 10PM.
 - **Afternoon checkup:** You should not eat or drink anything from 5AM on your examination date.
- * If you have the colonoscopy reservation, please follow the colonoscopy guidelines.

Medications

- Make sure to tell us if you currently take any medicines for heart disease, brain disease, asthma, chronic lung disease, high blood pressure, diabetes, etc.
- If you regularly take the medicine such as anti-coagulants (coumadin) or anti-thrombotic agents (aspirin, plavix), please have the consultation with your physician and stop taking for 5~7 days prior to checkup date.
- On your checkup date, do not take diabetes medication(s) or do not get an insulin shot.
- Take your blood pressure medication as you normally do with a small sips of water on checkup date.

It is prohibited driving if you had endoscopy under conscious sedation.

Precautions for female examinees

- Pregnancy test should be performed if you suspect pregnancy before checkup.
- It is not possible to perform radiologic tests such as X-ray, CT scan and endoscopic examination during the period of pregnancy.
- For woman who is breast feeding, patient might have some limitation for the examination of mammography, imaging studies using contrast medium, and conscious sedation endoscopy.
- Urine test and pap smear examination may be limited if patient is in menstrual period. In case of female examinees, it is the best to receive checkup 3~4 days after the end of menstrual period.

Contraindication to MRI examination

- It is not possible to proceed MRI test for somebody who has claustrophobia or patient had an operation of pacemaker or metallic implants.